

PHOTO IDS

Purchase your new ID cards at the Rec Center office from 8:30 AM to 5 PM Monday thru Friday. Cost for Keene residents is \$20 per person. Non-residents cost is \$50 per person, all ages. IDs are valid through Aug. 2012. No card? Daily fee is \$2 Keene residents and \$3 non-residents.

Join Our Walking Program

The Recreation Center offers a safe walking environment Monday thru Friday 7 AM to 2 PM. An annual ID is required at a cost of \$10 and may be purchased at the main office. Show your current Keene Senior Center membership card and receive a walking pass at no charge. Avoid the cold, ice, snow or rain and walk with us.

Rouleau's Taekwondo has offered quality instruction at Keene Rec Center for over a quarter of a century.

Children's' new beginners classes are held Thursdays 6—7 PM and advanced children's classes are Mondays and Thursdays 6—7:30 PM. Adult new beginners are held Thursdays 6 - 7 PM, with advanced classes on Mondays and Thursdays 6 – 8 PM. Class tuition rate is \$40 per month per individual with family rates available. For more information call Master David Perra 756-3318, email perramcclellan@gmail.com or check out the webpage www.rouleustaekwondo.com

Come to the Camp Fair! Check out all the programs our community has to offer for Summer 2012. The Camp Fair will take place on March 31st from 11AM – 2PM at the Keene Recreation Center. There will be performances, prizes and more! Come see how you and your children can participate in the all the fun this summer. Sponsored by Parent Express.

ACTIVITY NIGHT SCHEDULE

DATE	SPONSOR
January 6, 2012	KHS Girls Volleyball
January 13, 2012	Keene Knights Football
January 27, 2012	Cal Ripken Baseball
February 3, 2012	Keene Babe Ruth Baseball
March 2, 2012	Keene Youth Hockey
March 9, 2012	KHS Tennis Boosters
March 23, 2012	KHS Hockey
March 30, 2012	Cheshire United Soccer
April 6, 2012	UCC
May 4, 2012	KHS Girls Basketball Boosters
May 11, 2012	KHS Girls Softball
May 18, 2012	Keene Rec Dance
May 25, 2012	Snow Day Make-Up

CHALLENGER BRITISH SOCCER CAMP

KPRD and Challenger British Soccer Present Soccer Camps for 3 to 12 year olds July 16th – 20th at the Fuller School soccer fields. Sign up online before June 1st to receive a Free Jersey.

Mini Soccer 9am - 10:30 am
Ages 3-6yrs - \$98
Half Day 9am – 12pm
Ages 7-12yrs - \$133
Adult Coaches Clinic to be held July 19th at the Recreation Center.

Online Registration at www.challengersports.com
\$10 late fee is added if payment is not received by July 6th.



EASTER EGG HUNT The annual Easter Egg Hunt will be held Saturday, April 7th at 10 AM, at Wheelock Park on Park Avenue for Keene resident youngsters age 3-8 years old. Inclement weather location—Recreation Center.

Winners will be chosen by special eggs found, not the quantity of eggs they have in their basket. Each participant will receive a prize and a toothbrush. Bring your own bag or basket for collecting. This event is sponsored by the Keene Parks & Recreation Department, Price Chopper and the Keene Sentinel. Good Luck to all participants.

HUNTER SAFETY CLASSES: Held at the Rec Center April 16, 18, 20, 23, 25 and 26 from 6:15 - 9PM. The course is limited to the first 40 people (ages 12 and older) who register. Register online at www.huntnh.com. For more info call Steve Runcy at 357-7728.

WINTER TODDLER PLAYGROUP Designed for parents and children up to age 5. Come gather in the Recreation Center Multi-purpose Room twice a week, bring your child's favorite toy, give them a chance to run off some of that excess energy and take the opportunity to meet other parents. The program runs from 10:30 to noon, every Tuesday and Thursday and will end in April. Parents must be present with child. Tuition: \$20 per family for the season. Call the Rec Center at 357-9829 for more details.

ZUMBA! Are you ready to party yourself into shape? That's exactly what the Zumba® program is all about. It's an exhilarating, effective, easy-to-follow, Latin-inspired, calorie-burning dance fitness-party™ that's moving millions of people toward joy and health. The Rec center will be offering Zumba classes on Tuesday and Thursday evenings from 5:30PM-6:30PM. The program will begin on 1/24/2012 and cost is \$35 per month. "Ditch the workout join the party!"

Keene Parks and Recreation 2012 Winter/Spring Flyer
Contact us at the Recreation Center, 312 Washington Street, Keene, NH 03431
Phone: 603-357-9829, Fax: 1-866-743-0609

On the web at www.ci.keene.nh.us

Follow us on FACEBOOK!

Not a school sponsored activity



Events to watch for!

- **Boston Red Sox Games!**
- **Theater Trips!**
- **Summer Playground Registration!**

TIME TO SIGN UP FOR SPRING SPORTS! Held at the Rec Center
Keene Cal Ripken Baseball Feb 4, 9—noon, Feb 15, 5—8 PM
Allyson Barden Youth Softball Feb 4 and 18, Mar 10, 9—noon
Keene Knights Football Mar 24, and May 19, 9—noon
Keene Youth Lacrosse Jan 9 and 18, 6—8 PM

Recreation Center Hours

The Recreation Center Game Room and Gym are open for public use on the hours listed below:

Monday thru Friday Gym 3 – 4:45 PM* All ages

*Note: Youth league practices may curtail public use during season.

Game room 3 – 5:30 PM All ages

Mon –Wed –Fri Noon—2 PM Adult Basketball in the Gym

Tue & Thu Noon—2 PM Adult Soccer in the Gym

Tuesday & Thursday Gym 7 – 9 PM High school & up

Wednesday Indoor Soccer in the Gym 7—9 PM High school & up

Saturday Gym and game room Noon to 4 PM ** All ages

Sunday Gym and game room Noon to 4 PM All ages

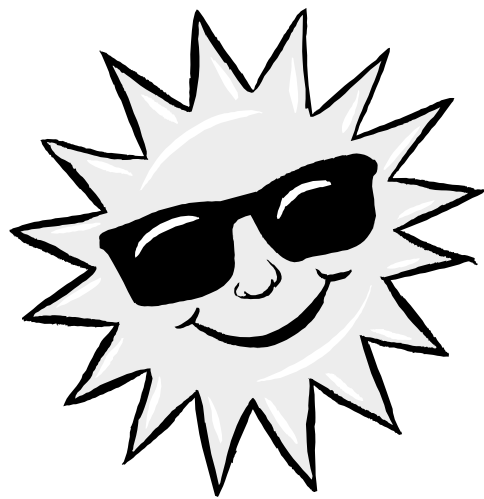
**Note: Gym hours may vary on the weekends due to current recreation programs.

The Game Room opens at 9 AM on Saturdays during the youth basketball season.

Snow Days and School Vacations 9 AM – 5 PM

Children must be at least 6 to use the facility. Each room is adult supervised at all times. The gym is open for shooting around or pick up basketball. The game room has a TV, pool tables, ping pong, nok-hockey, air hockey, Wii, and quiet board games available for use.

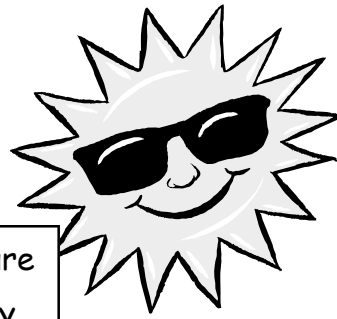
For information on any Recreation Department programs, call the Recreation Center at 603-357-9829. Office hours are Monday thru Friday, 8:30 AM to 5 PM.



IT'S SUMMERTIME 2012!! WHAT CAN THE CHILDREN DO??

Keene Parks and Rec has programs ...
For children aged 6 to 11
Check out these outdoor playground programs ...

DUE TO ANTICIPATED CONSTRUCTION AT ROBIN HOOD PARK, THE PLAYGROUND PROGRAM WILL TAKE PLACE AT THE RECREATION CENTER'S FULLER PARK. CHILDREN WILL BE BUSSED TO ROBIN HOOD DAILY TO SWIM.



Both playgrounds offer: Weekly Nature Programs Increased Physical Activity Enthusiastic, Experienced Staff

GAMES—TRIPS—
SPECIAL EVENTS—
ARTS AND CRAFTS—
POOL TIME—
MAKE NEW FRIENDS

Resident Weekly fee \$60
Or save 15% and sign up for the 8-week season \$408
Non-Resident Weekly fee \$90
Or save 15% and sign up for the 8-week season \$612

Wheelock Park
Enrollment Limited to 90 children
Ages 6 to 11, 8 am to 4 pm, M-F

Watch for the Summer flyer for complete details. Registrations will be accepted starting in March. Call the Rec Center for details 357-9829

* Pool admission during program hours is part of the registration fee. To attend *
* the pools outside of playground hours, attendees will need to pay the daily fee or *
* purchase a pool pass. Once registration limits for both programs are filled, the *
* programs will be closed. *



KPRD IS YOUR PLACE FOR RED SOX TICKETS — We plan to have three games to offer—dates and times to be determined after January 20th , and we'll update the webpage and Facebook with that information. Tickets will go on sale Tuesday February 7th at 8:30 am, by phone and in person. Visa and Mastercard accepted as payment for trips.

THE 2012 BOSTON FLOWER & GARDEN SHOW!

First Impressions The WOW Factor to Outdoor Spaces
In 2012, The Boston Flower & Garden Show returns to the Seaport World Trade Center in Boston and will offer hundreds of ideas for adding the 'wow' factor and a welcoming vibe to outdoor spaces. The theme - First Impressions- will showcase ways to express your personality and style as well as add enjoyment and value to your property.



Meet HGTV star John Gidding, host of Curb Appeal: The Block, when he visits the show Friday, March 16 to demonstrate easy garden makeovers. Tickets are \$38.50 per person and includes the coach bus transportation and entrance to the show. Lunch is on your own. The bus will leave the Rec Center at 8 AM, returning around 5 PM

ANDY CONNOR'S FOREVER IRISH MARCH 13 AT THE VENUS DEMILO IN SWANSEA MA

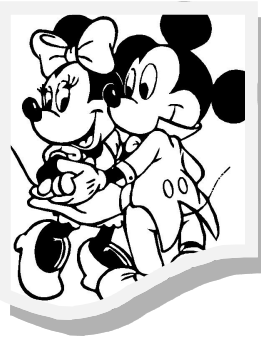
Direct from his SOLD OUT performance at Carnegie Hall to our stage, Andy Cooney's outstanding voice and dynamic stage presence has always been a favorite among American and Irish audiences everywhere. His talent and versatility provide the ability to deliver a song directly to the hearts of his audience . Forever Irish contains two additional acts - Liam O'Connor, a spellbinding display of raw energy, passion and melodic genius. He is an internationally renowned button accordionist who will excite this year's Forever Irish Tour . The Irish Sopranos have been featured on television in Ireland and America have toured all over Ireland, the UK and America. This talented trio consists of three of Ireland's finest sopranos .



Price: \$69.00 per person
Includes Transportation, Luncheon, & Show

DISNEY ON ICE AT THE MASS MUTUAL CENTER IN SPRINGFIELD MA

Come with us the first week of April (date to be announced) for Disney On Ice presents Mickey and Minnie's Magical Journey. Price and specific date will be announced in early February ... Watch the website and Facebook for updates!
Make imagination your destination! Join Mickey Mouse and Minnie Mouse on a journey into the magical worlds of Disney's The Little Mermaid, The Lion King, Peter Pan and Lilo & Stitch. From Ariel's enchanting undersea kingdom to Never Land with Peter Pan and his sassy fairy friend Tinker Bell, you'll be captivated by the music, beauty and laughter in a journey so magical, you'll never want to go home!



CALL 603-357-9829 TO REGISTER FOR OF THESE TRIPS